

ONE SINGLE SOFTWARE FOR ALL NEEDS.

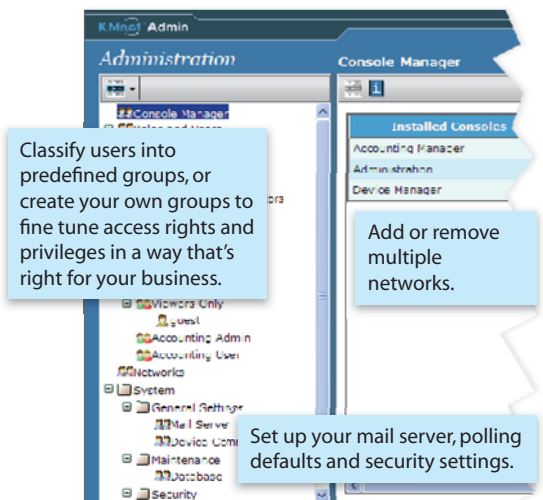
KMnet Admin is Kyocera's unified device management software that uses a web-based platform to give network administrators easy and uncomplicated control over every device in the organisation. Tasks that used to require multiple programs or walking to each printer can now be accomplished in a single, fast, modern environment.

Manage printing environments with a single product for device management, print queue management and accounting.

Key Benefits

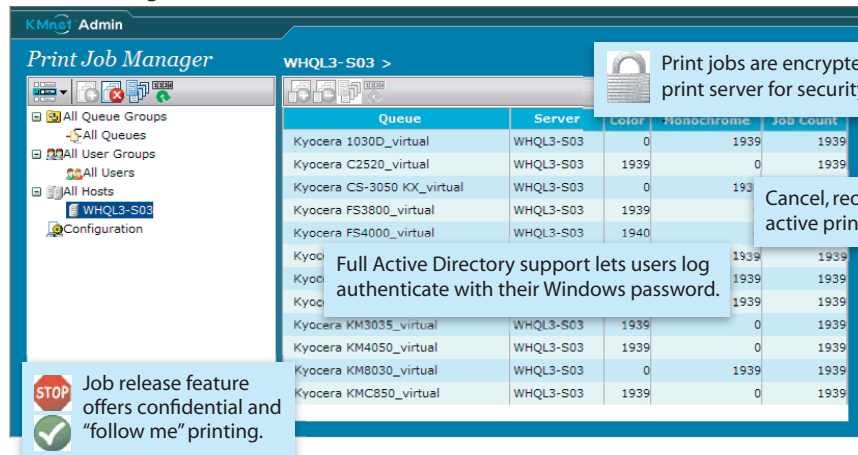
- Unified software for network device management
- Manages thousands of devices on multiple networks
- Web-based client access for administrators and end-users that requires no installation on client computers
- Built using state-of-the-art technologies including AJAX and J2EE
- Integrated Print Job Manager plug-in console provides all the tools for complete control over print jobs.
- Integrated Accounting Manager plug-in console delivers a complete picture of what gets printed when, where, and by whom
- Powerful framework to build new add-ons and add capabilities
- Supports Kyocera and most 3rd party devices

Administration Console



The Administration console lets you manage users, networks, alerts, and reports in a simple and intuitive way.

Print Job Manager Console



The Print Job Manager console let you install and manage print queues from your desktop.

KMnet Admin Interface Overview

ENTERPRISE DEVICE MANAGEMENT SOFTWARE

Device Manager Console

Update the firmware of one device, or one thousand, in a few simple steps.

Find printers by any property.

Switch easily from console to console

Organize your printers in any number of groups and subgroups.

Intuitive icons show you the status of every device in real time.

Advanced alert management and support for SNMP traps make sure that every printer error and warning gets communicated to the right person immediately.

Instant status filters let you find printers that need attention with one click.

The Device Manager console lets you manage thousands of printers and MFPs, in your office or around the world, right from your desktop.

Accounting Manager Console

Create comprehensive usage reports and rankings with the report wizard. (KYOsupport required)

View current and historical print totals.

Block access for unauthorized users and set daily, weekly, or monthly print limit for authorised users.

Set up accounts and account groups by devices or users.

The Accounting Manager console brings advanced, fully featured print accounting to your organisation.

KMnet Admin's extensive reporting features let you analyze and optimize your printing environment and project future purchases. (KYOsupport required)

TECHNICAL SPECIFICATIONS

Server Requirements

Microsoft Windows® 2000, Microsoft Windows® 2000 Server, Microsoft Windows® XP Professional, Microsoft Windows® Server 2003, Java™ JDK 1.4.2 or higher

Small to Medium Networks: 512MB RAM, 500MB hard disk space for installation and device database
Enterprise Networks: 1GB RAM, 2GB hard disk space for installation and device database

Client Operating System Requirements

Microsoft Windows® 95/98/ME, Microsoft Windows® 2000, Microsoft Windows® XP Professional, Microsoft Windows® Server 2003

Client Browser Requirements

Microsoft Internet Explorer 6

Supported devices

Kyocera network devices, and most third party network devices that support the standard printer MIB

Included Components

KMnet Admin Device Manager, KMnet Admin Print Job Manager Plug-in, KMnet Admin Accounting Plug-in. For KMnet Admin Reporting Plug-in KYOsupport is required. JBoss 4.0.2, Firebird 1.5.2

Your Kyocera Business Partner:

KYOCERA MITA Europe B.V., Hoeksteen 40, 2132 MS Hoofddorp, The Netherlands, Tel +31 (0) 20 65 40 000, Fax +31 (0) 20 65 31 256, www.kyoceramita-europe.com, info@kyoceramita-europe.com
KYOCERA MITA Corporation, 2-28, 1-Chome, Tamatsukuri, Chuo-Ku, Osaka 540-8585, Japan, www.kyoceramita.com

Kyocera does not warrant that any specifications mentioned will be error-free. Specifications are subject to change without notice. Information is correct at time of going to press. All other brand and product names may be registered trademarks or trademarks of their respective holders and are hereby acknowledged.

