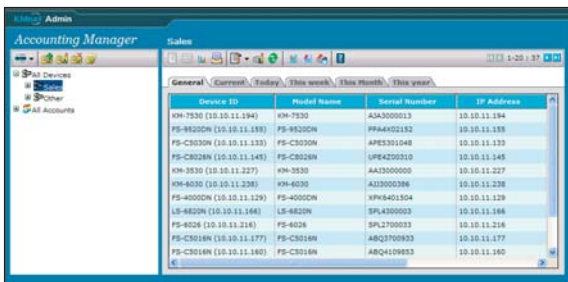


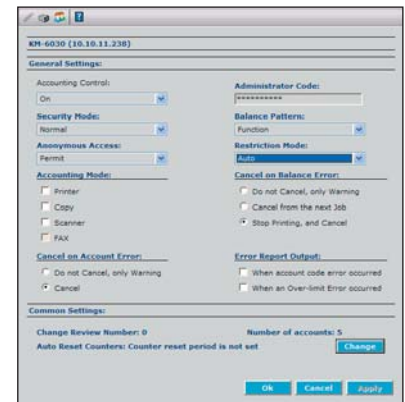
# ADVANCED PRINT ACCOUNTING FOR YOUR NETWORK.

## Key Benefits

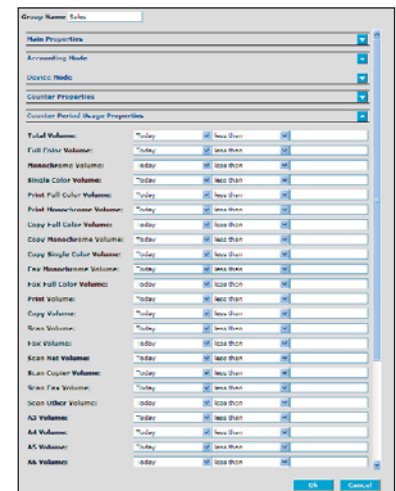
- Web-based management of device and user accounts
- Web-based client access for administrators and end-users that requires no installation on client computers
- Consolidated information for Devices, Accounts, Queues, and Queue Users
- Detailed point-and-click tabular, graphical, and combined reports
- Export to HTML
- Detailed usage and ranking reports (KYOSupport required)
- Full integration with KMnet Admin provides a unified software for network device management
- Manages thousands of devices on multiple networks
- Built using state-of-the-art technologies including AJAX and J2EE



Accounting Manager console



Editing Device Settings



Setting Counter Usage Policies

### TECHNICAL REQUIREMENTS

#### **Server Requirements**

Microsoft Windows® 2000, Microsoft Windows® 2000 Server, Microsoft Windows® XP Professional, Microsoft Windows® Server 2003, Java™ JDK 1.4.2 or higher

Small to Medium Networks: 512MB RAM, 500MB hard disk space for installation and device database  
Enterprise Networks: 1GB RAM, 2GB hard disk space for installation and device database

#### **Client Operating System Requirements**

Microsoft Windows® 95/98/ME, Microsoft Windows® 2000, Microsoft Windows® XP Professional, Microsoft Windows® Server 2003

#### **Client Browser Requirements**

Microsoft Internet Explorer 6

#### **Supported Devices**

Kyocera network devices, and most third party network devices that support the standard printer MIB

### ACCOUNT REPORTING

#### **Supported Counters**

Page counts, depending on device model: Total, color total, monochrome total, color printed, monochrome printed, color copied, monochrome copied, printed, copied total, scanned total, faxed total, scan-to-fax, scan-to-copier, scan-to-network, A3, A4, A5, A6, B4, B5, B6, Legal, Letter, Ledger, Statement, Folio, Hagaki

#### **Device Usage Reports**

Report Types: Scan volume, output volume, output mode, volume per paper size, volume per model, counter per device, rankings, top ten  
Report Periods: Daily, weekly, monthly

#### **Account Usage Reports** (KYOSupport required)

Output volume by function and mode, output volume per paper size, counter per account, rankings, top accounts, top devices

#### **Available Chart Types** (KYOSupport required)

Line, pie, bar, stacked bar, line with table, pie with table, bar with table, stacked bar with table

### ACCOUNT DEVICE MANAGEMENT

#### **Account Operations**

Create and delete accounts, create and delete device and account groups, group devices and accounts, set account limits by device or account, monitor of account lock status, set account counter renewal periods, manage device account settings (access, restriction, security)

#### **Email Notifications**

Regressive account counter value, regressive device counter value, account cleared, device accounts cleared, device inactive for 1 month, device recommended monthly volume exceeded, device recommended monthly volume 90% used, account inactive for 1 month, account balance exhausted, account balance 90% exhausted, unauthorized balance change, scheduled report created

#### **Print Notifications**

Account balance exhausted, unauthorized access

#### **Device Settings**

Polling periods, accounting control, administrator password, accounting mode, security mode, cancel on account error, cancel on balance error, balance pattern, anonymous access, renewal period, setting access limits to devices

Your Kyocera Business Partner: