

KMnet Viewer 5.0

NETWORK DEVICE MANAGEMENT SOFTWARE

NETWORK DEVICE MANAGEMENT SOFTWARE.

KMnet Viewer 5 is Kyocera's device management software for up to 100 devices. Offering counter readings, status feedback, remote device configuration and alerts of network devices at one central administration point, it is comprehensive yet easy to use.

FEATURE OVERVIEW

- Automated discovery of networked devices
- Comprehensive display of device information (settings, counters, users, address book, logs, etc.)
- Remote configuration of device settings and properties
- Executing firmware upgrades for single and multiple devices
- Device status notifications (e.g. paper jam, low toner) via e-mail
- Customizable views for device groups and according to dynamic criteria (e.g. all devices with low toner)
- Map display with user defined background
- Export of device information and counter data for analysis

NEW IN VERSION 5.0:

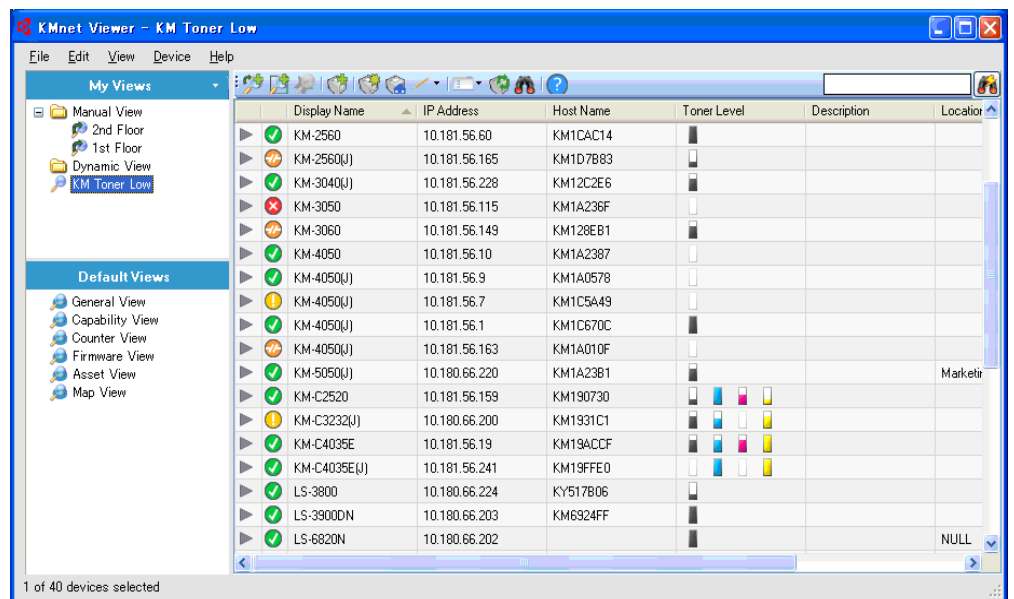
- **Enhanced security**
- **Multi set: Configuration of multiple devices simultaneously**
- **Firmware upgrades for FS-1920 and above**
- **Default views & custom views**
- **Easy to use interface with improved usability**

Professional Network Device Management

KMnet Viewer 5.0 provides all the functionality for network device management in an easy to use interface.

Custom Views

With KMnet Viewer 5.0 it is possible to show groups of selected devices, and to display devices according to predefined search criteria. For instance, all devices with low toner can be listed at one click of the mouse.



Display Name	IP Address	Host Name	Toner Level	Description	Location
KM-2560	10.181.56.60	KM1CAC14	[Low]		
KM-2560(J)	10.181.56.165	KM1D7B83	[Low]		
KM-3040(J)	10.181.56.228	KM12C2E6	[Low]		
KM-3050	10.181.56.115	KM1A236F	[Low]		
KM-3060	10.181.56.149	KM128EB1	[Low]		
KM-4050	10.181.56.10	KM1A2387	[Low]		
KM-4050(J)	10.181.56.9	KM1A0578	[Low]		
KM-4050(J)	10.181.56.7	KM1C5A49	[Low]		
KM-4050(J)	10.181.56.1	KM1C670C	[Low]		
KM-4050(J)	10.181.56.163	KM1A010F	[Low]		
KM-5050(J)	10.180.66.220	KM1A23B1	[Low]		Market
KM-C2520	10.181.56.159	KM190730	[Low]		
KM-C3232(J)	10.180.66.200	KM1931C1	[Low]		
KM-C4035E	10.181.56.19	KM19ACCF	[Low]		
KM-C4035E(J)	10.181.56.241	KM19FFEO	[Low]		
LS-3800	10.180.66.224	KY517B06	[Low]		
LS-3900DN	10.180.66.203	KM6924FF	[Low]		
LS-6820N	10.180.66.202		[Low]		NULL

KMnet Viewer 5

NETWORK DEVICE MANAGEMENT SOFTWARE

FULL CONTROL OF YOUR PRINTERS AND MFPS

Automated discovery of all devices on IPv4 and IPv6 networks for a complete overview of all output devices.

Remote configuration of devices without having to leave the office.

Multi set allows administrators to apply settings and configurations to multiple devices simultaneously. Settings can also be copied from one to multiple other devices.

Firmware updates for single or multiple devices make it easy to keep all printers up-to-date and secure.

HIGHLY CUSTOMIZABLE FOR FAST RESULTS

Default views offer predefined views of all devices for common scenarios, like counter, firmware, or map view.

Custom views can additionally be created to group devices (manual views) or to automate searches (dynamic views). This allows to see all relevant devices at one click of the mouse (e.g. all devices of one department, or all devices with low toner).

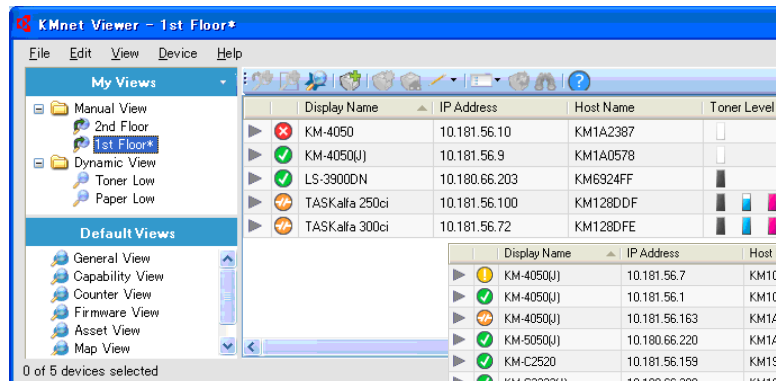
Quick Search and Advanced Search allow administrators to filter devices, for instance by model number, speed, status, and firmware. Search criteria can be saved for later use as custom view.

Device Maps allow to record the location of printers so that administrators can quickly locate and troubleshoot devices.

SOLVE PROBLEMS BEFORE THEY IMPACT USERS

Customizable e-mail notifications in case of device errors and warnings ensure that the right people are informed immediately for corrective maintenance.

Supply and maintenance alerts enable administrators and service providers to react even before end-users are affected.



Manual Views

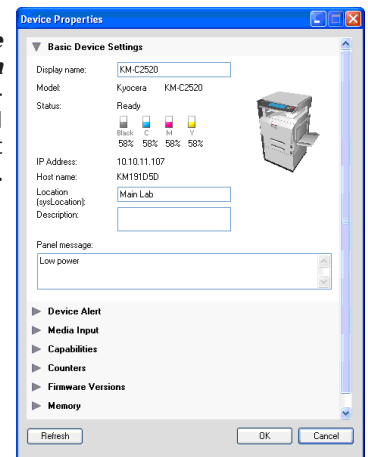
Devices can be individually grouped in order to obtain a quick overview of all relevant devices and their status.

BENEFITS

- Simple centralised management of networked devices
- Remote monitoring and configuration
- Simultaneous setting of multiple device
- Customizable views for individual requirements
- Vendor independent device discovery
- **Reduction of device administration effort**
- E-mail notification of device alerts to administrator and service partner
- **Reduction of device downtimes**
- **Improvement of device maintenance**
- Easy to install and to use, low hardware requirements
- Fast operation, no training required
- **Suitable for all small and medium enterprises**

Remote Device Configuration

Device settings and properties are displayed and can be edited in KMnet Viewer remotely.



Comprehensive Counter Readings

KMnet Viewer 5.0 gives a fast overview of all output volumes. This allows to analyse a company's printing behaviour and to determine whether all devices are at the right places.

Your KYOCERA Business Partner:

KYOCERA MITA Europe B.V., Otto-Hahn-Straße 12, 40670 Meerbusch, Germany,
Tel +49 (0) 2159 928-500, Fax +49 (0) 2159 928-599,
www.kyoceramita.eu, info@kyoceramita-europe.com

KYOCERA MITA Corporation, 2-28, 1-Chome, Tamatsukuri, Chuo-Ku, Osaka 540-8585, Japan,
www.kyoceramita.com

KYOCERA does not warrant that any specifications mentioned will be error-free. Specifications are subject to change without notice. Information is correct at time of going to press. All other brand and product names may be registered trademarks or trademarks of their respective holders and are hereby acknowledged.

